



# Betty Larue Beaty

OCT 2, 1946 - JAN 13, 2020



Scan to Visit

*Robertson*  
FUNERAL DIRECTORS

# Table of Contents

<b>Obituary</b> .....	Page 3
<b>Events</b> .....	Page 4
<b>Tribute Wall</b> .....	Page 5
<b>Media</b> .....	Page 6



## **Betty Larue Beaty**

OCT 2, 1946 - JAN 13, 2020

**B**etty Larue Beaty, 73, of Arlington, Texas passed away peacefully Monday, January 13, 2020.

Graveside services will be 11:00 AM Saturday, January 18, 2020, in Wheeler Cemetery in Wheeler, Texas with Mike Beaty, officiating.

Arrangements are by Robertson Funeral Directors of Wheeler.

Betty Larue Beaty was born October 2, 1946 in Wheeler to Herman and Bessie Long Beaty. She grew up in Pampa and later moved to Amarillo where she began to work for Bell Helicopter as a quality records supervisor. Bell relocated her to Arlington in 1989. She volunteered at Mission Arlington, was an avid animal lover and reader. She especially loved reading her Bible. She also enjoyed playing on her iPad, binge watching Netflix, and listening to country and gospel music. Larue loved talking to her family and reminiscing about the old days. Larue had daughters of love, her daughter's best friends, and adopted their kids as her own which she called her grand munchkins. She loved to play and spend time with her daughters of love and grand munchkins. She had an endless capacity for unconditional love. Even after her death, she demonstrated unconditional love for others by being a donor through LifeGift.

She was preceded in death by her parents; three brothers, Richard Don Beaty, Gerald Beaty, and Eugene Beaty; and a sister in law, Billie Beaty.

Survivors include her daughter, Monica Bunton of Arlington; her sister in law, Barbara Beaty of Odessa; three nephews, Ray Beaty and wife Roxann, Bryan Beaty, and Mike Beaty and wife Faith; a niece, Joni McKinney and husband Scott; several great nieces and nephews; her daughters of love, Nichele Burns of Amarillo and Nancy Cabrera and husband Frank of Arlington; and her grand munchkins, Franky, Karla, Selena, and Kamila.

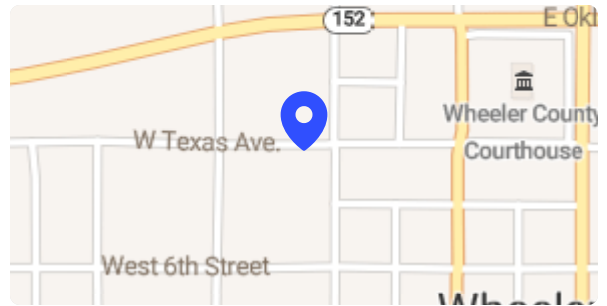


# Events

**Betty Larue Beaty**  
OCT 2, 1946 - JAN 13, 2020

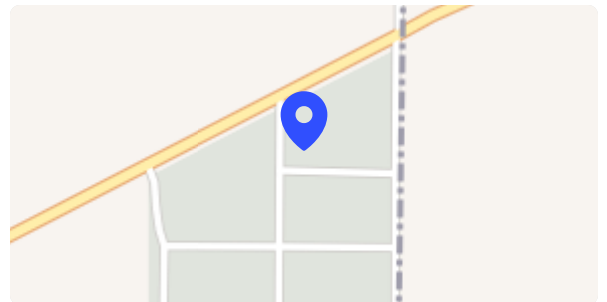
## Visitation

- Friday**, January 17, 2020
- 5:00 PM - 7:00 PM CT
- Robertson Funeral Directors - Wheeler**  
508 South Canadian Street, Wheeler TX 79096



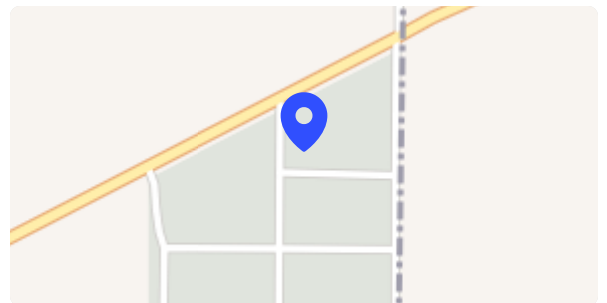
## Graveside Service

- Saturday**, January 18, 2020
- 11:00 AM CT
- Wheeler Cemetery**  
16355 FM-2473, Wheeler TX 79096



## Cemetery Details

- Wheeler Cemetery**  
16355 FM-2473, Wheeler TX 79096





## Tribute Wall

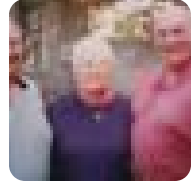
**Betty Larue Beaty**  
OCT 2, 1946 - JAN 13, 2020



**Sarah Beaty** shared a photo to the **Tribute Wall** album.

I will miss you !!! Love you auntiee !!!! This is still my favorite picture of all of you together. This is how I will remember yall. Smiling and up to mischief as always !!!!

January 18 at 11:26 AM



**Nancy Segovia-Cabrera** sent a Rose Garden Heart to the Beaty family.

January 16 at 9:08 AM





## Media

**Betty Larue Beaty**  
OCT 2, 1946 - JAN 13, 2020



**Sarah Beaty** shared a photo to the **Tribute Wall** album.

January 18 at 11:26 AM





## **Memories only last if you share them**

Join us in honoring Betty by contributing to a collection of shared memories.



Scan to Visit

*Robertson*  
FUNERAL DIRECTORS